

BUILDING-STRUCTURE INVENTORY FORM

DIVISION FOR HISTORIC PRESERVATION
NEW YORK STATE PARKS AND RECREATION
ALBANY, NEW YORK (518) 474-0479

FOR OFFICE USE ONLY	
UNIQUE SITE NO.	<u>103-05-0582-HSP</u>
QUAD	_____
SERIES	_____
NEG. NO.	_____

H 1

YOUR NAME Van Liew, Consultant/ NSF DATE: 8/79
N Sherrill Foster

YOUR ADDRESS: Box 416, St. James, L.I. TELEPHONE: 516-584-5600

ORGANIZATION (if any): Natural Heritage Trust

***** PLUMB EXIST: STABLE and BARN *****

IDENTIFICATION

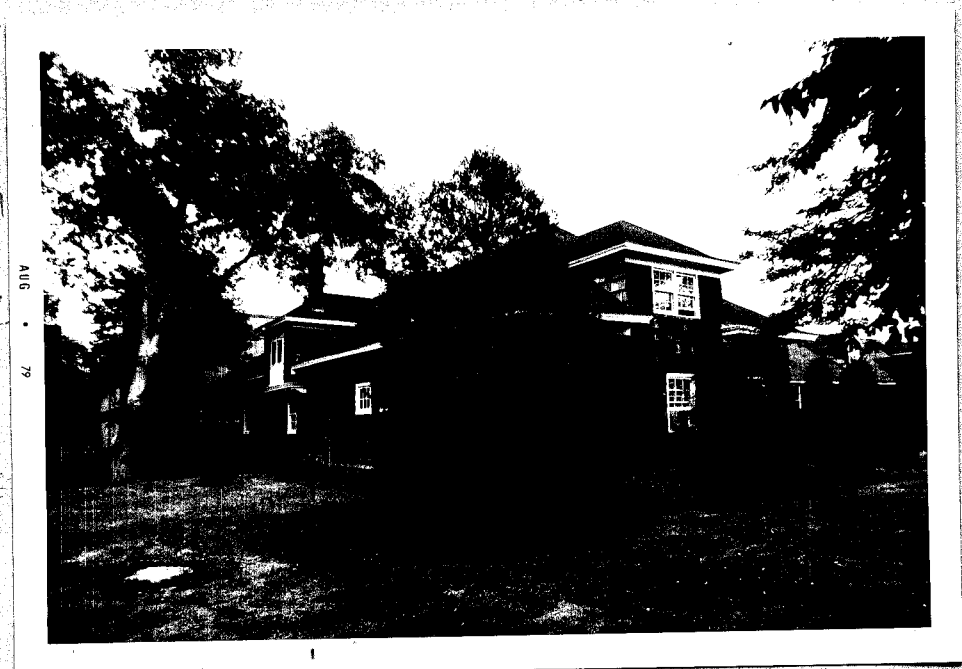
- 1. BUILDING NAME(S): (Maintenance Building - Heckscher State Park)
- 2. COUNTY: Suffolk TOWN/CITY: Islip VILLAGE: East Islip
- 3. STREET LOCATION: Timber Point Rd, South Side,
- 4. OWNERSHIP: a. public b. private
- 5. PRESENT OWNER: LISPC ADDRESS: Belmont State Park
- 6. USE: Original: Stable and barn Present: Maintenance equipment storage
- 7. ACCESSIBILITY TO PUBLIC: Exterior visible from public road: Yes No
Interior accessible: Explain on business

DESCRIPTION

- 8. BUILDING MATERIAL: a. clapboard b. stone c. brick d. board and batten
e. cobblestone f. shingles g. stucco other: _____
- 9. STRUCTURAL SYSTEM: (if known) a. wood frame with interlocking joints
b. wood frame with light members
c. masonry load bearing walls
d. metal (explain) _____
e. other _____
- 10. CONDITION: a. excellent b. good c. fair d. deteriorated
- 11. INTEGRITY: a. original site b. moved if so, when? _____
c. list major alterations and dates (if known):
Additions 1954, 1955. updated with new siding

Roll 2
12. PHOTO: H 1-7
North West Corner

13. MAP: Bay Shore East Quadrangle



14. THREATS TO BUILDING: a. none known b. zoning c. roads
 d. developers e. deterioration
 f. other: _____
15. RELATED OUTBUILDINGS AND PROPERTY:
 a. barn b. carriage house c. garage
 d. privy e. shed f. greenhouse
 g. shop h. gardens
 i. landscape features: tarmac parking area
 j. other: administration building
16. SURROUNDINGS OF THE BUILDING (check more than one if necessary):
 a. open land b. woodland
 c. scattered buildings
 d. densely built-up e. commercial
 f. industrial g. residential
 h. other: _____

17. INTERRELATIONSHIP OF BUILDING AND SURROUNDINGS:

(Indicate if building or structure is in an historic district)

Barn is now attached at right angles to the Administration Building. Tarmac parking area is inside the angle. views to public are pastoral.

18. OTHER NOTABLE FEATURES OF BUILDING AND SITE (including interior features if known):

A 3 bay, very long hip roof with bell cast at roofedge, 2½ story barn with bell cast hip dormer on brackets, and a second story hay loft door and projecting gable roof.

SIGNIFICANCE

19. DATE OF INITIAL CONSTRUCTION: after 1872

ARCHITECT: _____

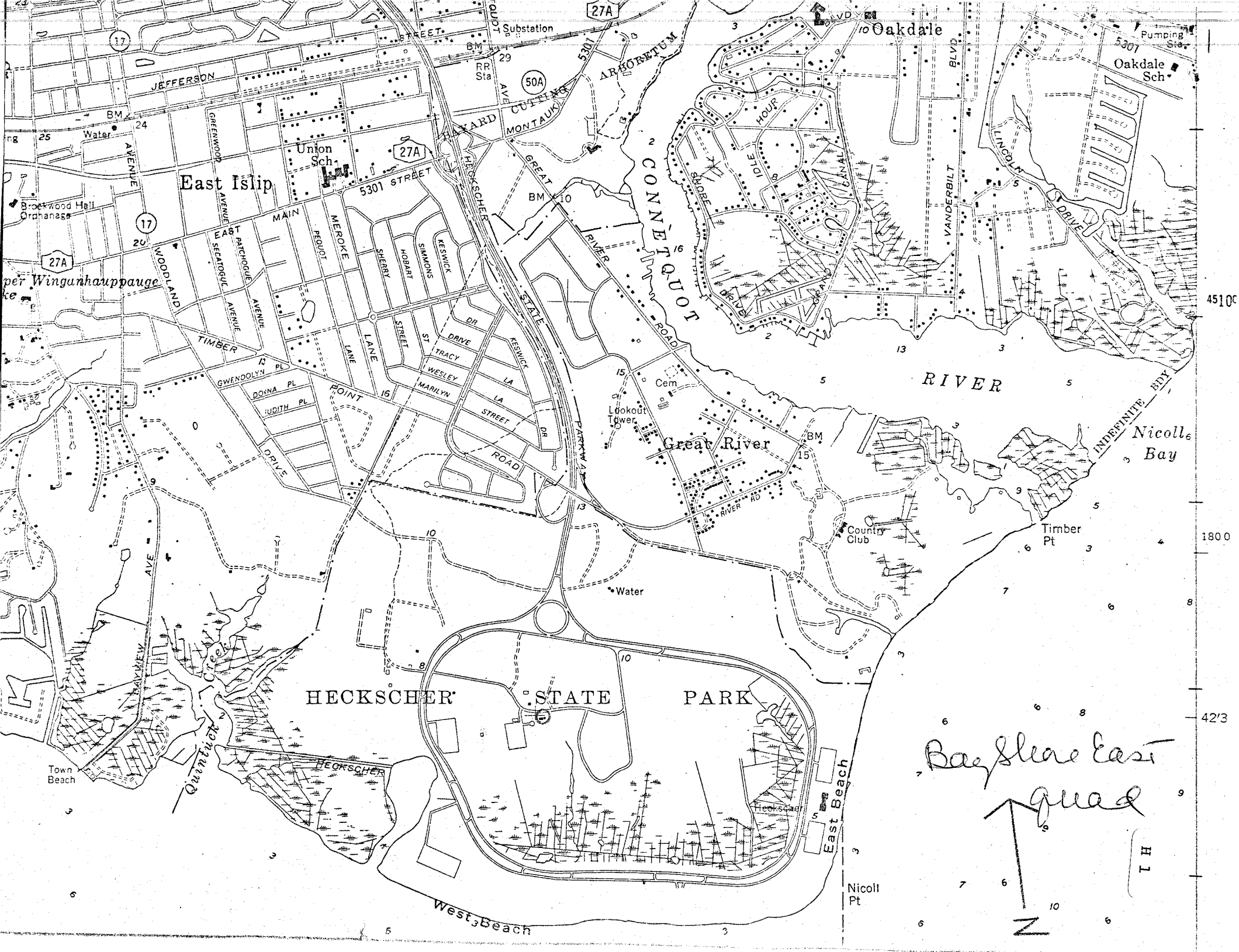
BUILDER: _____

20. HISTORICAL AND ARCHITECTURAL IMPORTANCE:

This is one of the buildings from the Plumb estate, one of the two major estates making up the acreage of Heckscher State Park

21. SOURCES: Interview with Mr. O'Neil 7/8/79
 Interview with Betty Kuss 8/18/79 quoting from Old Oakdale History and South Side Signal 10-19-1872.

22. THEME:



East Islip

Great River

HECKSCHER STATE PARK

Bay Shore East quad

N

I H

27A

27A

27A

50A

17

17

5301

29

10

15

16

13

10

10

13

5

3

5

3

4

6

7

6

8

9

6

10

45100

1800

42'3

Brookwood Hall Orphanage

per Wingunhauppauge

Town Beach

Quinnipiac

Union Sch.

Oakdale Sch.

Country Club

Timber Pt

Nicoll Pt

East Beach

West Beach

Substation

Pumping Sta.

ARBORETUM

Oakdale

JEFFERSON

GREENWOOD AVENUE

EAST PATCHOGUE AVENUE

TIMBER

GWENDOLYN PL

DORNA PL

JUDITH PL

DRIVE

DRIVE

DRIVE

DRIVE

DRIVE

DRIVE

DRIVE

DRIVE

DRIVE

MAIN

MEBOKE

PEQUOT

LANE

LANE

POINT

DRIVE

DRIVE

DRIVE

DRIVE

DRIVE

DRIVE

DRIVE

DRIVE

DRIVE

DRIVE

SHERRY

HOBART

STREET

ST

TRACY

WESLEY

MARILYN

STREET

LA

LA

STREET

ROAD

ROAD

ROAD

ROAD

ROAD

KESSWICK

SIMMONS

DRIVE

DRIVE

DRIVE

DRIVE

DRIVE

DRIVE

DRIVE

DRIVE

DRIVE

DRIVE

DRIVE

DRIVE

DRIVE

DRIVE

WESLEY

LA

LA

STREET

ROAD

ROAD

ROAD

ROAD

ROAD

ROAD

ROAD

ROAD

ROAD

ROAD

ROAD

ROAD

STATE

STATE

STATE

STATE

STATE

STATE

STATE

STATE

STATE

STATE

STATE

STATE

STATE

STATE

STATE

STATE

CONNETQUOT

CONNETQUOT

CONNETQUOT

CONNETQUOT

CONNETQUOT

CONNETQUOT

CONNETQUOT

CONNETQUOT

CONNETQUOT

CONNETQUOT

CONNETQUOT

CONNETQUOT

CONNETQUOT

CONNETQUOT

CONNETQUOT

CONNETQUOT

CONNETQUOT

CONNETQUOT

CONNETQUOT

CONNETQUOT

CONNETQUOT

CONNETQUOT

CONNETQUOT

CONNETQUOT

CONNETQUOT

CONNETQUOT

CONNETQUOT

CONNETQUOT

CONNETQUOT

CONNETQUOT

CONNETQUOT

CONNETQUOT

CONNETQUOT

CONNETQUOT

CONNETQUOT

CONNETQUOT

CONNETQUOT

CONNETQUOT

CONNETQUOT

CONNETQUOT

CONNETQUOT

CONNETQUOT

CONNETQUOT

CONNETQUOT

CONNETQUOT

CONNETQUOT

CONNETQUOT

CONNETQUOT

CONNETQUOT

CONNETQUOT

CONNETQUOT

CONNETQUOT

CONNETQUOT

CONNETQUOT

CONNETQUOT

CONNETQUOT

CONNETQUOT

CONNETQUOT

CONNETQUOT

CONNETQUOT

CONNETQUOT

CONNETQUOT

CONNETQUOT

CONNETQUOT

CONNETQUOT

CONNETQUOT

CONNETQUOT

CONNETQUOT

CONNETQUOT

CONNETQUOT

CONNETQUOT

CONNETQUOT

CONNETQUOT

CONNETQUOT

CONNETQUOT

CONNETQUOT

CONNETQUOT

CONNETQUOT

CONNETQUOT

CONNETQUOT

CONNETQUOT

CONNETQUOT

CONNETQUOT

CONNETQUOT

CONNETQUOT

CONNETQUOT

CONNETQUOT

CONNETQUOT

CONNETQUOT

CONNETQUOT

CONNETQUOT

CONNETQUOT

CONNETQUOT

CONNETQUOT

CONNETQUOT

CONNETQUOT

CONNETQUOT

CONNETQUOT

CONNETQUOT

CONNETQUOT

CONNETQUOT

CONNETQUOT

CONNETQUOT

CONNETQUOT

CONNETQUOT

CONNETQUOT

CONNETQUOT

CONNETQUOT

CONNETQUOT

CONNETQUOT

CONNETQUOT

CONNETQUOT

CONNETQUOT

CONNETQUOT

CONNETQUOT

CONNETQUOT

CONNETQUOT

CONNETQUOT

CONNETQUOT

CONNETQUOT

CONNETQUOT

CONNETQUOT

CONNETQUOT

CONNETQUOT

CONNETQUOT

CONNETQUOT

CONNETQUOT

CONNETQUOT