

14. THREATS TO BUILDING: a. none known b. zoning c. roads
 d. developers e. deterioration
 f. other: _____
15. RELATED OUTBUILDINGS AND PROPERTY:
 a. barn b. carriage house c. garage
 d. privy e. shed f. greenhouse
 g. shop h. gardens
 i. landscape features: _____
 j. other: _____
16. SURROUNDINGS OF THE BUILDING (check more than one if necessary):
 a. open land b. woodland
 c. scattered buildings
 d. densely built-up e. commercial
 f. industrial g. residential
 h. other: _____

17. INTERRELATIONSHIP OF BUILDING AND SURROUNDINGS:
 (Indicate if building or structure is in an historic district)

This house is located in Bayport south of Middle Road.

18. OTHER NOTABLE FEATURES OF BUILDING AND SITE (including interior features if known):

The Mrs. E.J. Stoppani Estate on the bay front was later Cox and more recently the Ursaline Convent. See photo on attachment.

SIGNIFICANCE

19. DATE OF INITIAL CONSTRUCTION: before 1902*

ARCHITECT: _____

BUILDER: _____

20. HISTORICAL AND ARCHITECTURAL IMPORTANCE:

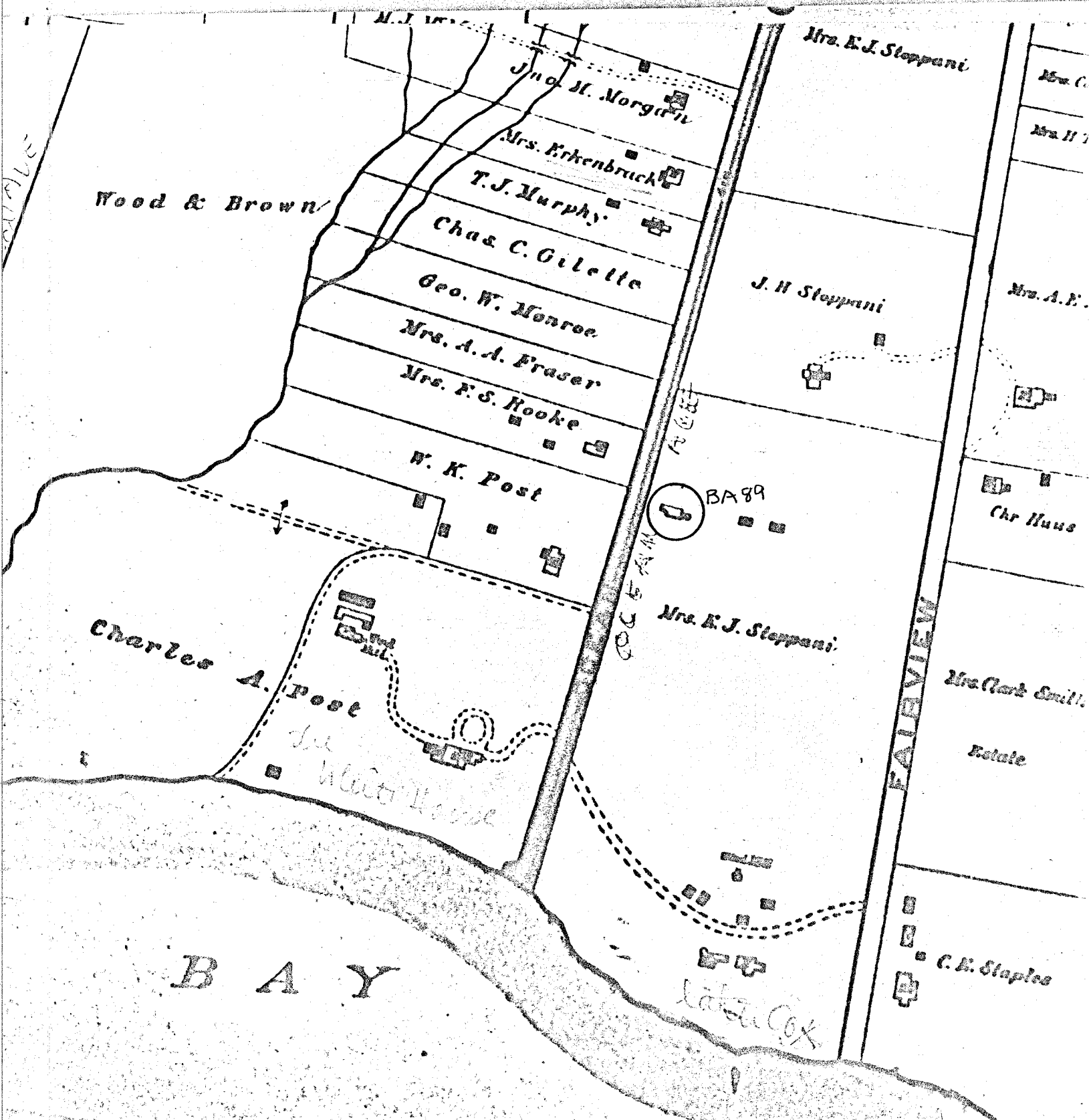
One and one-half story, three bay, Queen Anne cottage with scalloped shingles in front gable and on second floor. Main roof extended down over front porch. Clapboard first story. Original porch with turned posts. 2/2 windows. Brick foundation. One story bay window on south.

This house and property belonged to the Stoppani estate in 1902 and in 1915. See BA 87, 87A, 87B, and 98A for other buildings on the Stoppani estate.

The Mrs. E.J. Stoppani house (now gone) which stood on the bay front was older than the J.H. Stoppani house. See attachment.

21. SOURCES: *Belcher-Hyde, E., Atlas of Suffolk County, Brooklyn: 1902, pl. 15.
 Belcher-Hyde, E., Atlas of Suffolk County, Brooklyn: 1915, pl. 8.
 Photo Album of West negatives, collections Suffolk Marine Museum.

22. THEME: residential.



Wood & Brown

Jno. H. Morgan

Mrs. Erkenbruck

T.J. Murphy

Chas. C. Gillette

Geo. W. Monroe

Mrs. A.A. Fraser

Mrs. F.S. Rooke

W. K. Post

Charles A. Post

White House

BA 89

Mrs. E.J. Steppani

Mrs. E.J. Steppani

J. H. Steppani

Chr Haus

Mrs. Clark Smith

Estate

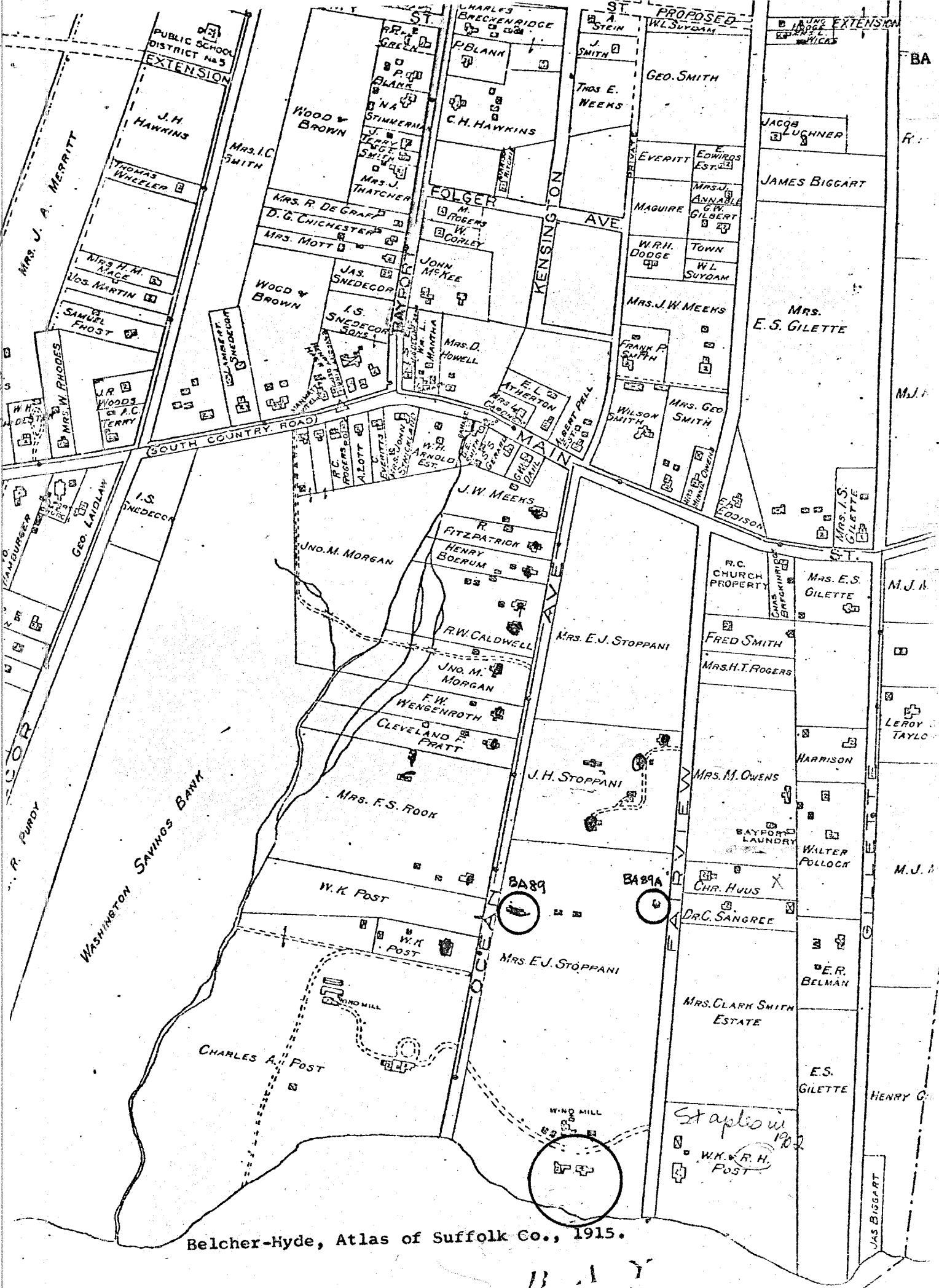
C. H. Staples

BAY

FAIRVIEW

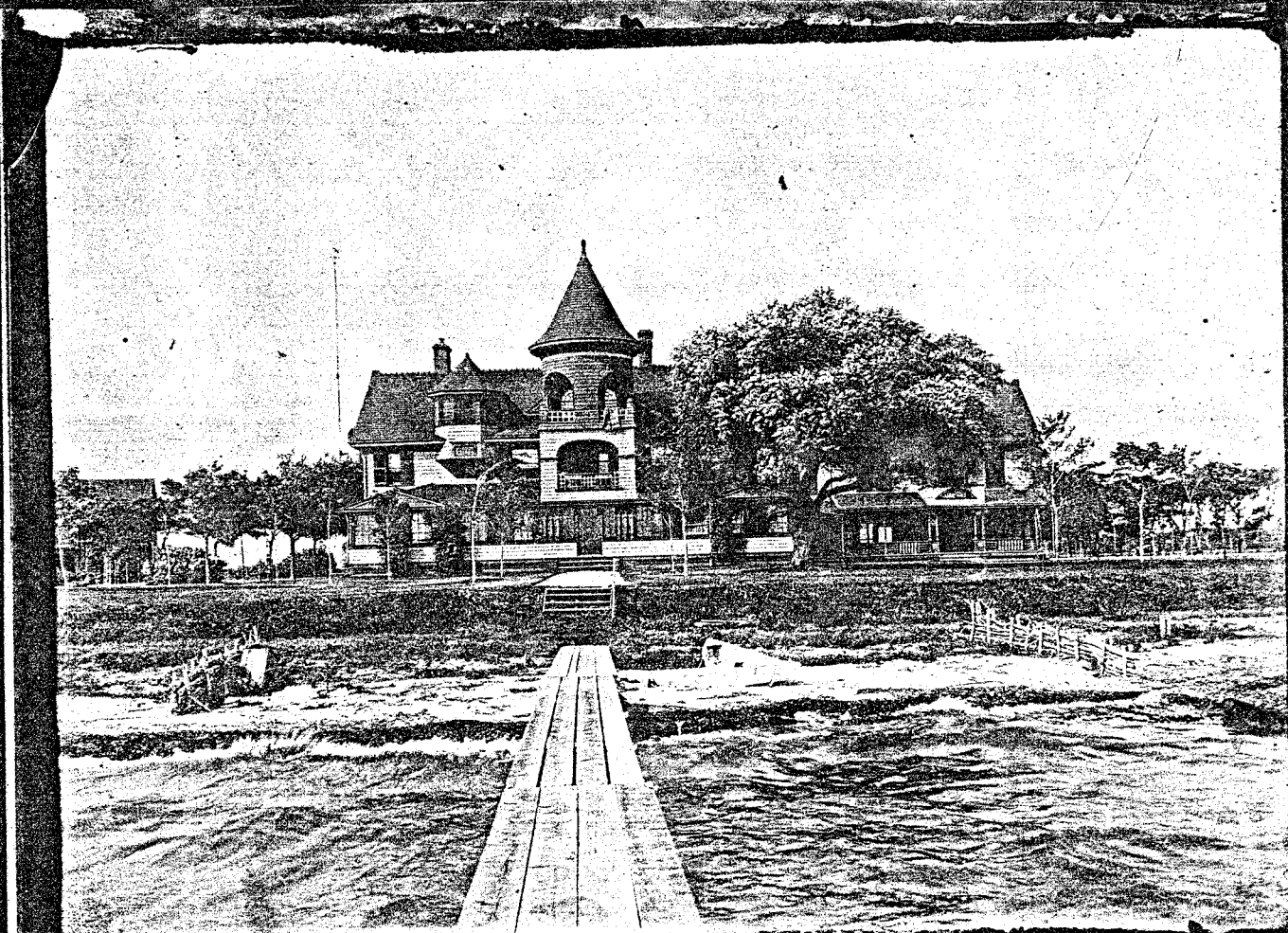
SUGAR

See Palcher House 1902



Belcher-Hyde, Atlas of Suffolk Co., 1915.

BAY

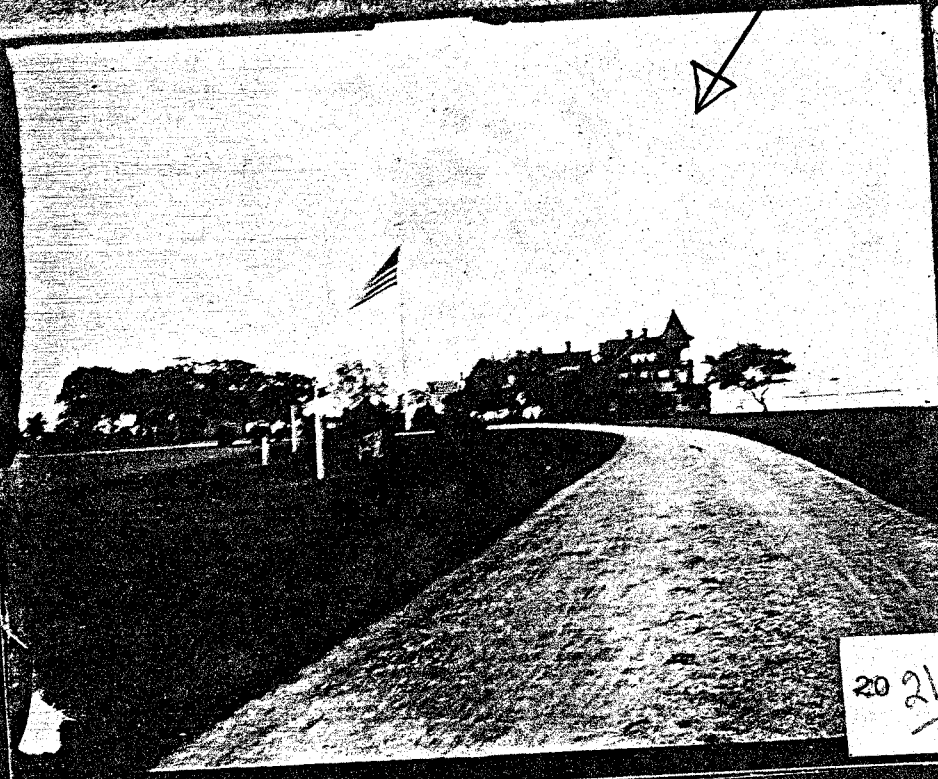
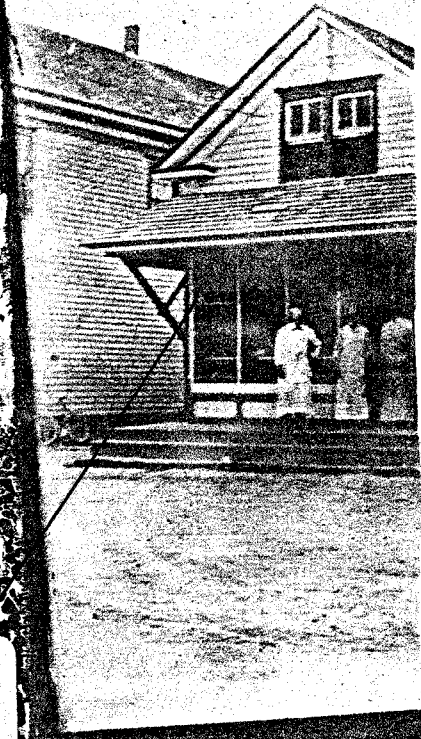
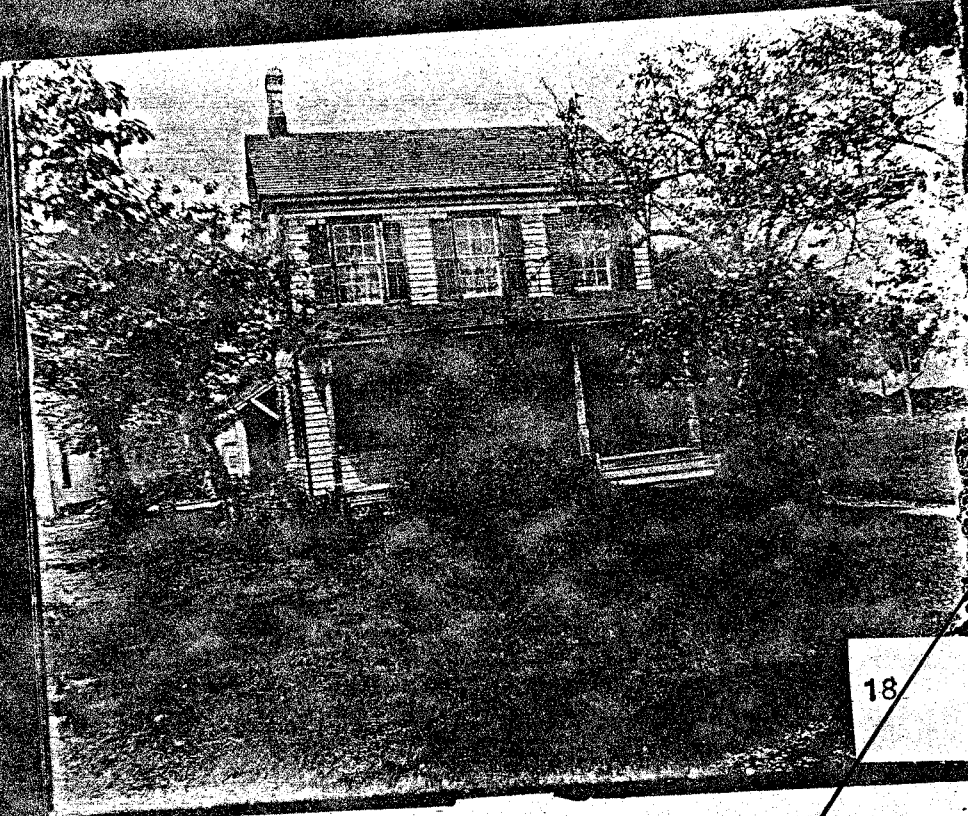


13

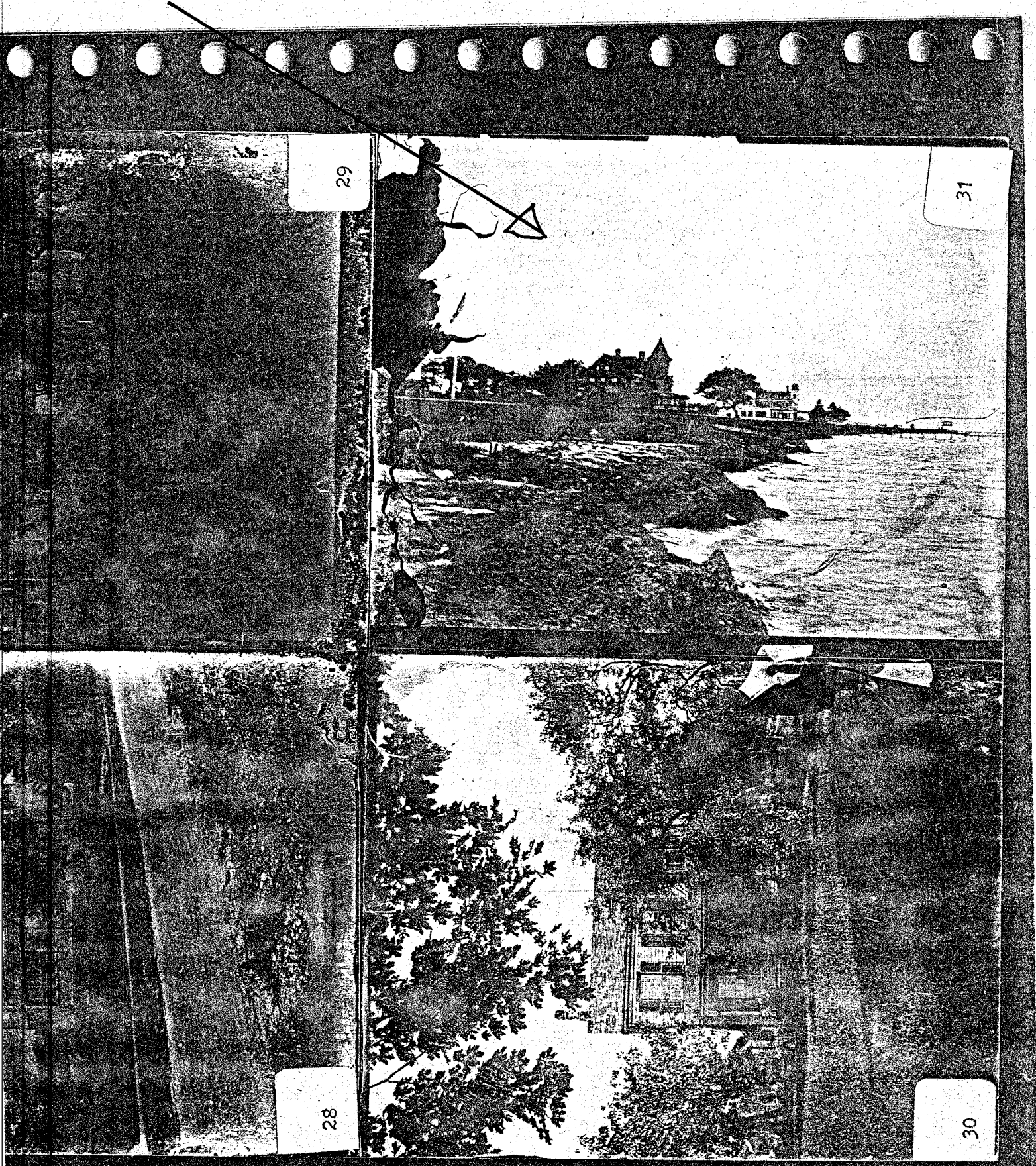
Mrs. E.J. Stoppani (later Cox)
demolished.

View of Stoppani-Cox house from the northwest.

West negatives, Suffolk Marine Museum.



View of Stoppani-Cox house from the southwest.



West negatives, Suffolk Marine Museum,

STORY 

60 Years Ago

The former Stoppani property on the bay in Bayport, then owned by Stephen P. Cox, had been sold to John J. O'Conner, who was occupying a cottage at Cedarshore.

Edward Sedlacek of Bohemia had returned from overseas. Anton Thuma and Otto Jost were the only boys from the village who were still on the other side.

The first chamber of the Dutch Parliament had adopted a motion to introduce woman suffrage in Holland.

A 50-hour week had been put into effect at Fahys watchcase factory in Sag Harbor.

Michael Manton had been reappointed postmaster of Sayville.

Bohemia cigar makers were on strike for higher wages.

The News said, "Seven local people yesterday for the first time tried a new thrill when they went up in an aeroplane and flew over the village. Arrangements with the pilot were made by G. Elliot Morrison. Rates were at the accepted rate of a dollar a minute.

50 Years Ago

George Brooks, night watchman for the John J. Mead Co., had received from the Chamber of Commerce a reward of \$100 for capturing a thief rifling a safe in the Mead Co. offices.

The causeway to Jones Beach on which the state had been at work for a year was about to be opened, as was the first of the bathing pavilions.

40 Years Ago

Application had been made to have Peace Haven, the former Vanderbilt mansion at Oakdale, then maintained as a retreat for Rosicrucians, removed from the tax rolls. It was assessed at \$125,000.

Vojta Benes, brother of the former president of

continued on page 4

1919
↖

Suffolk County News
7/19/79

BAYPORT